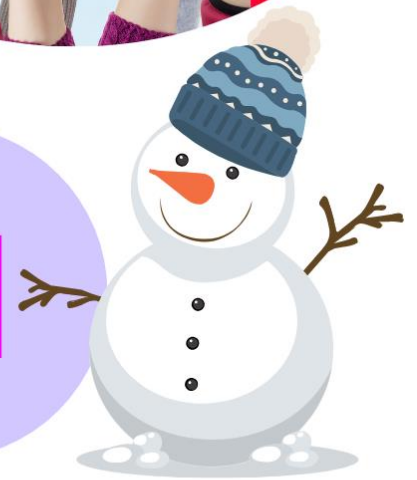




WISBECH CHILD AND FAMILY CENTRE

WHAT'S ON



January 2025



Welcome to our Child and Family Centres.

We aim to provide families of all abilities, identities and cultures with the support and information they need and to ensure our centres and zones are friendly and welcoming places for all.

There is a small charge for some groups, but please let us know if payment may be difficult.



Things you need to know...

Charging

Some groups have a charge of £2 per family, per session, although families on a low income will be eligible for free entry. Please pay in cash on the day.

Charges for childminders - £2 per childminder and own family plus £1 for any minded child or £1 per childminder if not bringing own family members plus £1 for any minded child.

Booking

Booking is essential for some sessions and spaces are limited.

Please call 01945 482989 or email childandfamilycentre.fenland@cambridgeshire.gov.uk

Privacy Notice

The Child and Family Centre holds information about the families and individuals we support for the purposes of monitoring, evaluation and future planning of the Child and Family Centre's services as part of Cambridgeshire County Council.

The information will be held in accordance with the General Data Protection Regulation (GDPR). Further information is available on the Cambridgeshire County Council's website www.cambridgeshire.gov.uk (search Privacy Notice).


Location Addresses

Oasis Child & Family Centre
St Michaels Avenue
Wisbech
PE13 3NR


Wisbech South Child & Family Centre
Elizabeth Terrace
Wisbech
PE13 2AQ

Monday				
Sensory SEND Group Drop In 9.30am to 11am	6 January	A play session designed for children with emerging or diagnosed additional needs and disabilities. Sensory-rich resources and activities to encourage development. A chance for parents and carers to meet and chat in a supportive environment. Siblings welcome. Includes self-weigh facilities.		Wisbech South Child and Family Centre
Sensory Babies 10am to 11.30am	6, 13, 20, 27 January	Fun filled sensory sessions which help children to develop and improve their motor skills, co-ordination and concentration. Parents-to-be welcome. Includes self-weigh facilities. Suitable for pre-mobile babies. To book, please call 01945 482989.	B £	Oasis Child and Family Centre
Toddler Playtime 10.30am to 12pm	6, 13, 20, 27 January	A stay and play session for early walkers and beyond, who are ready to explore the world around them. Bring your own healthy snack. Suitable for mobile children aged up to 3 years. To book, please call 01945 482989.	B £	Oasis Child and Family Centre




Tuesday				
Soft Play Fun 10am to 11am	7, 14, 21, 28 January	Bring your child along to enjoy a soft play session at the Child and Family Centre. Suitable for children aged 0 to 5 years. To book, please call 01945 482989.	B £	Oasis Child and Family Centre
Stay and Play 10am to 11.30am	7, 14, 21, 28 January	A stay and play session suitable for children aged 0 to 5 years. To book, please call 01945 482989.	B £	Wisbech South Child and Family Centre
Sensory babies 1pm to 2.30pm	7, 14, 21 January	Fun filled sensory sessions which help children to develop and improve their motor skills, co-ordination and concentration. Parents-to-be welcome. Includes self-weigh facilities. Suitable for pre-mobile babies. To book, please call 01945 482989.	B £	Wisbech South Child and Family Centre
Introducing Family Foods 1pm to 2.30pm	28 January	A workshop to find out more about how to introduce your baby to your family foods. To book, please call 01945 482989.	B	Oasis Child and Family Centre

Wednesday				
Maternal Vaccination Clinic 9.30am to 3.45pm	8, 15, 22, 29 January	A drop-in vaccination clinic run by the NHS for expectant mothers and under 5's. Vaccinations include RSV, Whooping Cough, MMR and BCG. For more information, please call 0300 555 5055.		Wisbech South Child and Family Centre
Toddler Playtime 9.30am to 11am	8, 15, 22, 29 January	A stay and play session for early walkers and beyond, who are ready to explore the world around them. Bring your own healthy snack. Suitable for mobile children aged up to 3 years. To book, please call 01945 482989.	B £	Oasis Child and Family Centre
Stay and Play: 50 Things 10am to 11.30am 	8, 15, 22, 29 January	A stay and play session for children aged 0 to 5 years. Activities based on the 50 Things To Do Before You're Five app. To book, please call 01945 482989.	B £	Wisbech South Child and Family Centre
First Steps Storytime & Craft Club 10.30am to 11.30am	15, 22, 29 January	Storytime and themed craft session suitable for children aged 0 to 5 years.		Wisbech Library Ely Place Wisbech PE13 1EU
Drop in Weighing Clinic 12pm to 2pm	8, 15, 22, 29 January	An opportunity to come along, see the health visitors and get your baby weighed. Baby play and self-weigh also available in the room next door. Clothes bank available. No need to book.		Oasis Child and Family Centre

Wednesday continued				
Coffee and Chat Drop In 1.30pm to 3pm	8, 15, 22, 29 January	Come in for a cuppa, play with toys and chat with others. Self-weigh facilities and baby clothes bank available.		Wisbech South Child and Family Centre
Pathway to Parenting 3pm to 5pm	8, 15, 22, 29 January	Pathway to Parenting is a face-to-face interactive programme, covering lots of topics to help you prepare for birth and parenthood. Suitable for parents from 20 weeks gestation. To book, please call 01945 482989.	B	Oasis Child and Family Centre

Thursday				
Peckover Garden Forest Fun 9.30am to 10.30am	9, 16, 23, 30 January	Calling all nature lovers! Using the principles of 'forest school' join us for a morning of discovery, adventure, and fun in the magnificent garden in the centre of our town! Wear appropriate clothing for this outdoors session. Meet us inside the gates at the front of Peckover House. Suitable for children aged 0 to 5 years. To book, please call 01945 482989.	B	Peckover House North Brink Wisbech PE13 1JR
Little Learners 9.30am to 10.30am	9, 16, 23, 30 January	Specialist group run by the Early Support Team for children with SEND. Invite only.	R	Oasis Child and Family Centre
Little Explorers' Fun 10am to 11.30am	9, 16, 23, 30 January	A stay and play session suitable for children aged from 10 months or walking. To book, please call 01945 482989.	B £	Oasis Child and Family Centre
Stay and Play: 50 Things 10.30am to 12pm 	9, 16, 23, 30 January	A stay and play session suitable for children aged 0 to 5 years. Activities based on the 50 Things To Do Before You're Five app. To book, please call 01945 482989.	B £	Salvation Army Hall, John Thompson Road, Wisbech, PE13 2NF

Friday

<p>Five to Thrive</p> 	<p>Weekly</p>	<p>‘The things you do every day that help your child’s growing brain’.</p> <p>We will be sharing activity ideas to help you use <i>Five to Thrive</i> in your everyday routine with your baby. The ideas are very simple and can be recreated using items you probably already have around the house.</p>		<p>Facebook post:</p>  
<p>Messy Babies 10am to 11am</p>	<p>10, 17, 24, 31 January</p>	<p>Baby safe messy play suitable for pre mobile babies from around 4 months old. Dress for mess.</p> <p>To book, please call 01945 482989.</p>	<p>B £</p>	<p>Oasis Child and Family Centre</p>
<p>Messy Play 10am to 11am</p>	<p>10, 17, 24, 31 January</p>	<p>A fun messy play session, suitable for children 6 months to 5 years. Dress for mess.</p> <p>To book, please call 01945 482989.</p>	<p>B £</p>	<p>Wisbech South Child and Family Centre</p>
<p>Buggy Walks 10am to 11am</p>	<p>17 and 31 January</p>	<p>Join us for a buggy walk around Wisbech, starting from Wisbech South Child and Family Centre. Suitable for babies and toddlers in carriers, prams, and buggies.</p> <p>To book, please call 01945 482989.</p>	<p>B</p>	<p>Wisbech South Child and Family Centre</p>

Saturday

Something on a Saturday 10am to 11.30am	11 January	A stay and play session for parents who are unable to attend weekday groups. Suitable for children aged 0 to 8 years. To book, please call 01945 482989.	B £	Oasis Child and Family Centre
---	------------	---	----------------------	-------------------------------

SENSORY SEND GROUP



Monday 6 January
9.30am to 11am

No booking
required

Wisbech South Child and Family Centre
Elizabeth Terrace, Wisbech PE13 2AQ

A play session designed for pre-school children with emerging or diagnosed additional needs and disabilities. Sensory-rich resources and activities to encourage development. A chance for parents and carers to meet and chat in a supportive environment.




Siblings welcome.

Free and no need to book.



Cambridgeshire
**Child and Family
Centres**



	<p>We offer our Bookstart programme to those families whose children may need support developing their communication skills. If you are interested, please contact childandfamilycentre.fenland@cambridgeshire.gov.uk for a chat with one of our staff.</p>
	<p>'50 Things to Do Before You're Five seeks to help every child reach important health, learning, and wellbeing milestones.'</p> <p>We will be sharing activity ideas throughout our sessions from the <i>50 Things to Do app</i> you can use in your everyday routine with your children. The ideas are very simple and require low or no cost.</p>
	<p>Five to Thrive 'The things you do every day that help your child's growing brain'.</p> <p>We will be sharing activity ideas to help you use <i>Five to Thrive</i> in your everyday routine with your baby. The ideas are very simple and can be recreated using items you probably already have around the house!</p>
<p>Breastfeeding Support</p>	<p>Information on support available locally can be found by visiting: www.facebook.com/CambridgeshireInfantFeeding</p>
<p>Are you concerned about the safety of a child?</p>	<p>If a child is at risk of harm, or you are concerned about the safety of a child, please call the Contact Centre on 0345 045 5203 between 8am and 6pm, Monday to Friday. If it is outside office hours or at the weekend, call the First Response and Emergency Duty Team on 01733 234724, or the police on 999.</p>
<p>Support for Young People</p>	<p>Keep Your Head: A young people's mental health website for young people and their parents/carers living in Peterborough and Cambridgeshire. The site is universally accessible and is a central point for finding good quality local and national information on keeping well, self-help, and support services covering a range of issues. www.keep-your-head.com</p>

Opening Times

Oasis Child and Family Centre	Wisbech South Child and Family Centre
Monday to Friday 9am to 4pm <i>Booking for sessions will be taken after 9am each day.</i>	Monday to Friday 9am to 4pm <i>Booking for sessions will be taken after 9am each day.</i>

Contact Us

Get in Touch	
Oasis Child and Family Centre 01945 482989	Wisbech South Child and Family Centre 01945 482989
Email us: childandfamilycentre.fenland@cambridgeshire.gov.uk	



Follow us on Instagram
[@wcfc_fenland](https://www.instagram.com/wcfc_fenland)



Find us on YouTube
Cambridgeshire Child
and Family Centres



'Like' our page
Wisbech Child & Family
Centres

