

Engage

Enable

Annual Report
National Network of
Parent Carer Forums

Empower



National Network of Parent Carer Forums
'Our Strength is our Shared Experience'
www.nnpcf.org.uk

April 2020 - March 2021

Report compiled by Shannon Emery, BA Hons
under Twenty Six Design

Contact us

Introduction	1
Snapshot of the year	2
About the NNPCF	3
Introduction to the NNPCF	4 - 5
What we do	6 - 7
Our work this year	8 - 13
Regional annual reports	14 - 22
Wow moments!	23 - 25

Introduction

Welcome to the 2020-21 Annual Report from the National Network of Parent Carer Forums

Last year we started our annual report with “What a year!” and this year is no different.

The resilience from the parent carers who run forums has astounded us. This time last year we had an inkling that COVID wasn't going away fast, and you did what parent carers do: you picked up that baton and you ran with it, in the face of adversity.

The landscape for SEND has been tricky. The £700m allocated at last year's autumn budget didn't seem to touch the surface and we had frequent conversations with the DfE, telling them there was not enough money in the system and everyone was running at and beyond capacity.

EHCPs are on the rise, many families struggling getting some children back into school after lockdown, so preferring to stay home and educating their children, cases going to tribunal are also increasing, with forums and IAS services stretched and struggling with demand. We heard of families struggling to get the support they need in schools and the community and children unable to get onto a school roll, even with an EHCP, due to lack of suitable school places.. These stories we tell over and over again.

The SEND review consultation did not materialise, and still hasn't to this day, but we remain engaged in the work. During the year, we remained in constant contact with the Under-Secretary of State for Children and families, Vicky Ford, and worked closely with not just the SEND team at the DfE but also the LD and Autism team at NHS England.

It is important to remember though, when times continue to be hard, that we will continue to do this. We know that COVID isn't over yet and some of the things we know that are happening to our families, are actually nothing new, they are not always COVID related.

We have started a new way of working, many still at home, and we will continue to do whatever it takes to be represent the voice of parent carers and their families.

Please take time to read this report, we have gathered information from forums and asked them what they are most proud of, and they are throughout this report.

This is what keeps us as a steering group inspired. We are all part of local forums and the stories that you tell, the work you have done inspires, not just us, but those we converse with. Keep them coming, keep doing what you are doing and whatever the future holds, we know we are there together.



Here are some of the partners we worked with this year:



A snapshot of the year

30

Website news posts about our work

900

Different discussions on our closed group

40

New documents and webinars posted to the site

671,000

Facebook reach

About the NNPCF



Our work



Introduction to the NNPCF

Our vision and mission

The National Network of Parent Carer Forums (NNPCF) is the independent national voice of Parent Carer Forums.

Our mission is to deliver better outcomes for families living with special educational needs and disabilities (SEND). We aim to:

- Create a culture of participation and co-production across the education, health, social care and the voluntary sectors. This means that we are involved in all aspects of designing, commissioning, delivering and reviewing services as an equal partner.
- Empower our members to ensure that their voices are heard at a local, regional and national level
- Inspire our partners by sharing good practice and knowledge.

Our vision is for the best possible opportunities and futures for all children and young people with SEND and their families.

Who are we?

The National Network of Parent Carer Forums (NNPCF) is a parent carer led organisation, which has a network of 152 local Parent Carer Forums (PCFs) nationwide. Our role is to champion strategic parent participation at a local, regional and national level.

Each of the local Parent Carer Forums work within their region, and each region is represented by their National Steering Group member(s).

The Steering Group is made up of ten members who are recruited with the support of their region; they represent the nine regional areas in England (with two based in London) to ensure that the collective voices of members of local Parent Carer Forums are heard at a national level by working together.

“Parent Carer Forums are representative local groups of parents and carers of children and young people with disabilities who work alongside local authorities, education, health and other service providers to ensure the services they plan, commission, deliver and monitor meet the needs of children and families”

Para 1.13 SEND Code of Practice 2015

Meet the Steering Group

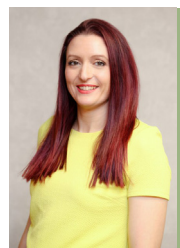
You can find full profiles of our steering group members on the NNPCF website
<https://nnpcf.org.uk/blog/about/meet-the-team/steering-group/?amp>



Tina Emery
South West and Co-chair
southwest@nnpcf.org.uk



Mrunal Sisodia
East of England and Co-chair
eastofengland@nnpcf.org.uk



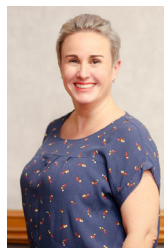
Zara Bowden
West Midlands
westmidlands@nnpcf.org.uk



Ros Luff
London
london@nnpcf.org.uk



Julie Bruce
Yorkshire and Humber
yorksandhumber@nnpcf.org.uk



Kath Bromfield
North West
northwest@nnpcf.org.uk



Anna Norris
East Midlands
eastmidlands@nnpcf.org.uk



Fazilla Amide
London
london@nnpcf.org.uk



Jo Gilliland
North East
northeast@nnpcf.org.uk



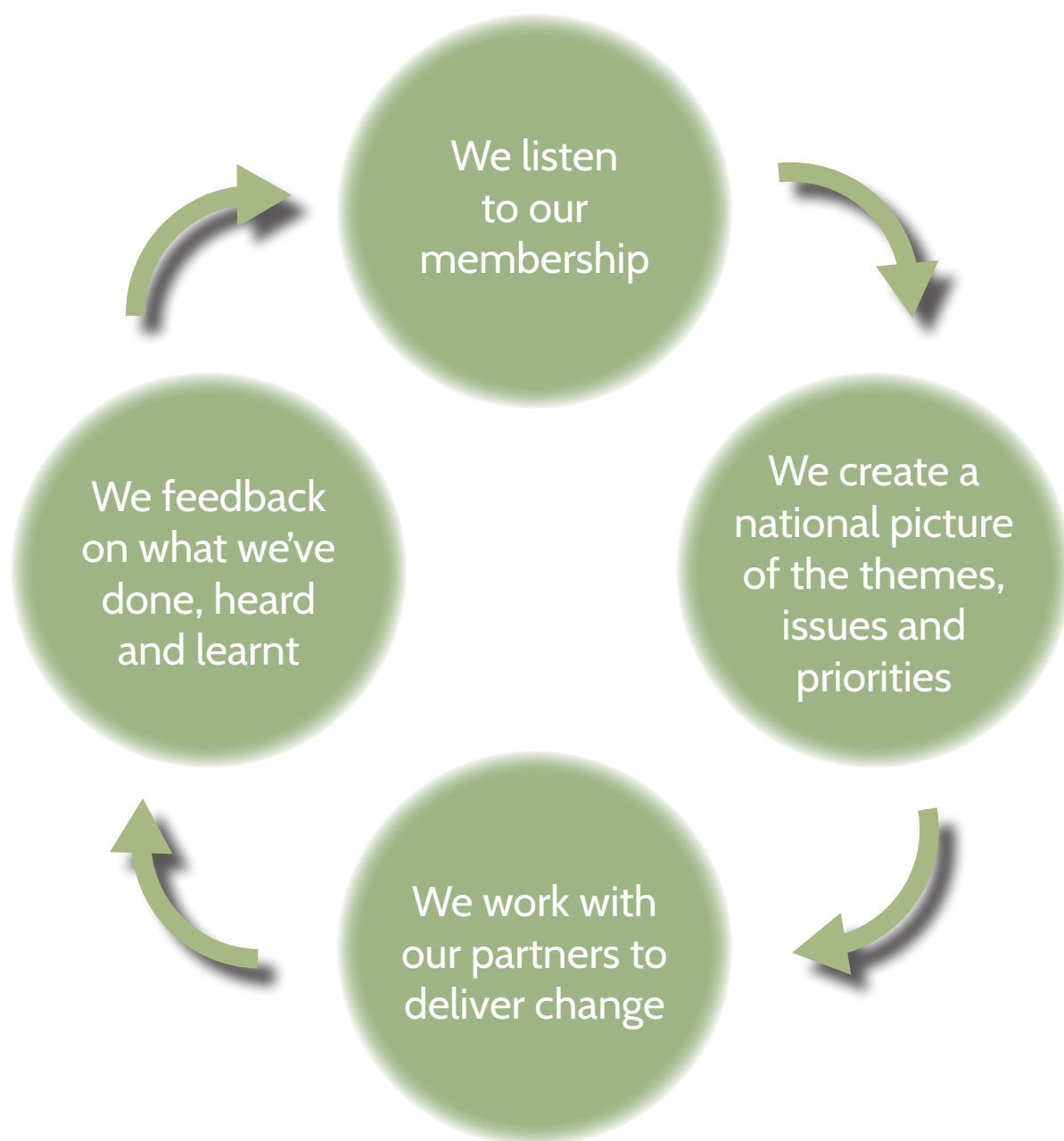
Sarah Clarke
South East
southeast@nnpcf.org.uk

The steering group membership did not change during the year, although Anna Norris did stand down from her role as East Midlands steering group member on the 31 March. We thank Anna for all of her hard work and she will be missed. We wish her good luck in her future roles.

In July Fazilla and Kath were re-appointed for a second term as representatives for London and the North West respectively.

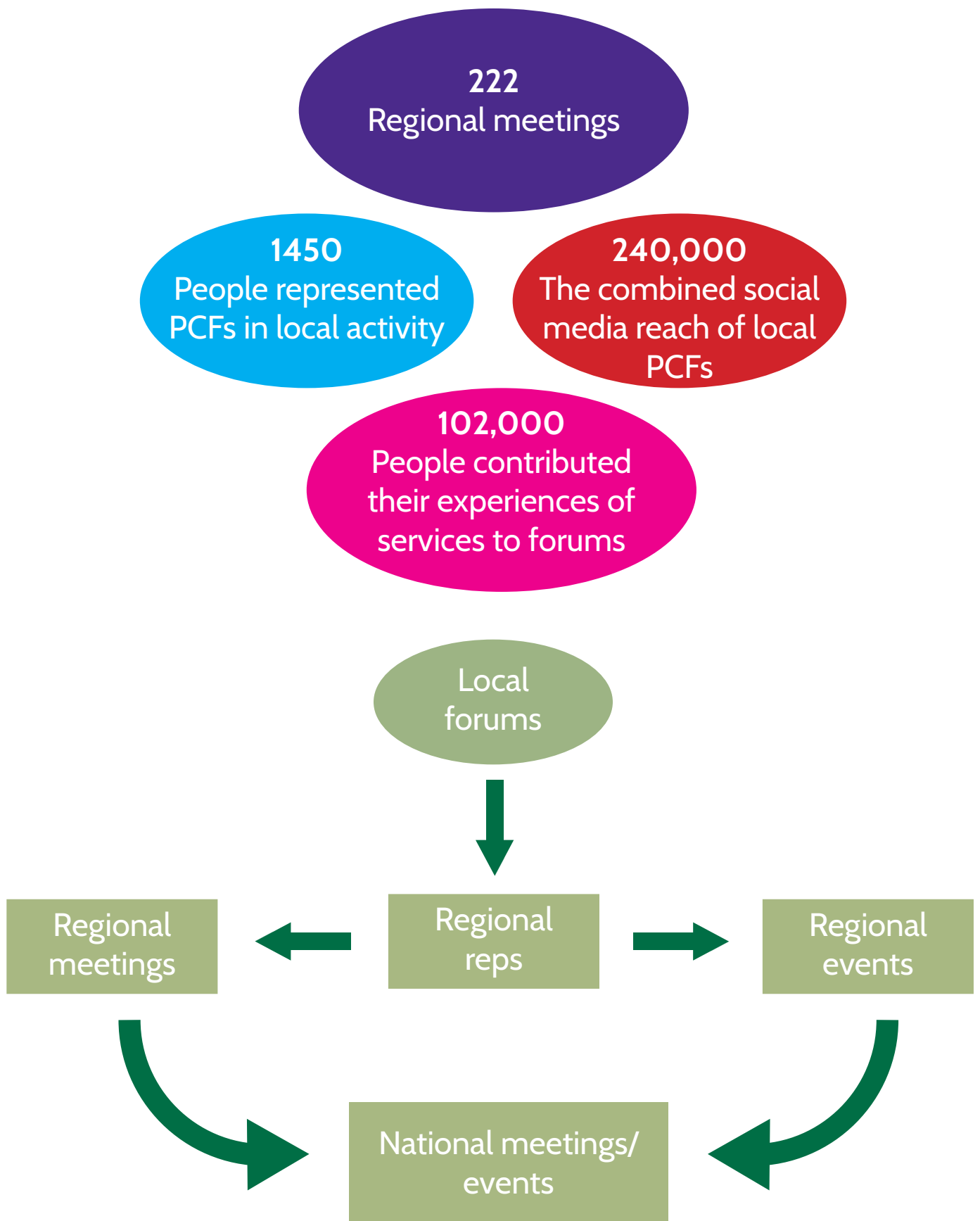
What we do

We think about our work in four simple stages:



Listening to our membership

The lived experiences of our members form the basis of everything we do. We use a variety of means to listen to our membership.



Our work this year

The best laid plans

In February 2020, we undertook our usual planning process and identified a series of priorities for the year. Little did we know that all of these plans would go out of the window as the world was overwhelmed by the coronavirus pandemic.

An incredibly difficult time for parent carers and PCFs

The 2020-21 year was difficult for most children and families. For families of children and young people with SEND, it was even more difficult with many of our children more effected by lockdown and most of the services we rely on simply not available. The inability of many local areas to coproduce with families on EHCP risk assessments and coronavirus act easements and the lack of meaningful respite care during this period meant that, despite our work, the experience for many families with SEND has been incredibly hard.

However, we have been amazed but not surprised by the dedication and commitment of parent carer forums through this period. You have adapted to the new normal with creativity and agility - you have been running virtual coffee mornings, providing peer support to families and conducting surveys to understand and escalate concerns. Your work has enabled the NNPCF to continue to give clear messages to government and the NHS about the impact of Covid 19 and what they need to do differently.

Value of forums has been recognised

Your work and its value has been recognised by all concerned. During this period, NNPCF representatives have met with four different ministers on numerous occasions over the year. In addition, the NNPCF has been invited to join key governmental and NHS boards including the Schools Recovery Advisory Group, the Covid 19 Vulnerable Children's Board and the NHS England Children and Young People's Stakeholder Council.

This has meant that we have been able to share your experiences with the highest levels of government.

Our voice has made an impact

Many of our representations have been taken on board and have formed a part of government policy and guidance. A few examples (from a long list) include:

- Early on, we and other challenged the use of clinical frailty scales and “do not resuscitate” notices for people with disabilities.
- We worked to get guidance, that was going out, changed to accommodate the needs of those with SEND (e.g. being able to go out with more than one carer and more than once a day, exemptions from wearing face masks).
- In school's guidance, we inserted new language into the sections on behaviour, exclusions and attendance emphasising the need to coproduce solutions with families and to take a supportive, not punitive approach.
- We ensured that the £1.7bn of catch up funding announced by the government could be spent on SEND services (such as SALT) and was not just restricted to academic tutoring.
- We changed return to school guidance to make sure it emphasised a holistic approach, not just attendance and behaviour.

We haven't just been working on Covid 19.

The NHS Long Term Plan

We have continued to have significant engagement with the NHS Long Term Plan. Most notably during the year NNPCF regions and local forums have supported the NHSE Learning Disability and /or Autism team with their regional roll out of the Key working pilots. In addition, NNPCF regions worked with NHSE to support their work on Tier 4 admissions avoidance for children.

The SEND Review

The SEND review understandably took a back seat to Covid 19 as key DfE personnel were pulled into pandemic response. However, when the review recommenced the NNPCF continued to have a big input into the review. The output of the “skunkworks” sessions was widely circulated to Ministers and the new permanent secretary at the Department for Education.

We presented a webinar on our input into the SEND Review at our last conference.

You can find it here:

NNPCF input into the SEND review - YouTube

<https://www.youtube.com/watch?app=desktop&v=mLOJLeQQlCY&feature=youtu.be>

And a very different conference

In amongst all of this we managed to put on a very different conference with our partners from Contact. Split over 6 days In November and March, we had great keynotes from Professor Russell Viner the president of the Royal College of Paediatrics and Child Health, Sue North and Ray James the Learning Disability and Autism leads from NHSE and messages from not one, but two Ministers in addition to the great sessions about the SEND review mentioned above. We also ran sessions focused at supporting forums on topics chosen by you on mental health, running a forum and supported employment. The school exclusions team were hugely impressed with the feedback from members at their workshop.

Nearly 1500 members attended 20 presentations and workshop as they were broadcast and we know that many more of you will watch them back over the coming weeks from the conference website.

NNPCF and Contact Conference – National Network of Parent Carer Forums C.I.C



Our National Representatives

Lara Roberts, NNPCF Participation Lead

2020-21 was a very quiet year for our national representatives team. Because of Covid, most of our usual activity shut down as all non-urgent and covid related work was deferred. Nevertheless, we continued to expand our team of national representatives identifying several new national reps who ably assisted steering group member throughout the year. We would like to thank all of our national representatives for their commitment and patience during what was a very difficult and unusual time for them and their place in the NNPCF.

After an enforced 18 month hiatus, we will seek to re-invigorate our national representative work in 2022.

Our priorities for 2021-22

Our business plan for 2021-22 identified four priorities. We believe these are the big items that will make the biggest difference to the outcomes for our children.

Support the recovery from Covid 19

Ensure that the parental voice is heard and work with government and the NHS to ensure that children with SEND are not further disadvantaged through recovery.

The SEND Review

Engage in the work of the SEND review to support the DfE to create the far reaching changes we believe are necessary.

The NHS Long Term Plan

Represent SEND families in the development and implementation of the NHS Long Term Plan which includes many important changes that will support our children.

Improve accountability in the SEND system

Work with Ofsted and the Care Quality Commission to develop the next phase of local area inspections and continue our work on bolstering the work of the SEND tribunal.

Our Policy and Consultation Work

Kay Moore, NNPCF policy and consultations lead

During the past year, our response to the Covid 19 pandemic has been a key focus of our policy and consultation work. In May 2020, the NNPCF responded to the Education Commons Select Committee's Inquiry into the impact of Covid 19 on education and children's services and as children and young people returned to school or college on 8th March 2021, we turned our attention to the Covid recovery.

Beyond the pandemic, we continue to prioritise our policy work in line with our own strategic vision and priorities.

During the last year we have:

- Responded a range of national consultations, including High Needs Funding; School Admissions Code and Fair Access Protocols; National Disability Strategy; Post 16 qualifications; NHS Provider Selection; NHS White Paper Reforming the Mental Health Act. You can find our consultation responses here [Consultation Responses – National Network of Parent Carer Forums C.I.C \(nnpcf.org.uk\)](#)
- Provided written evidence to the Independent review of children's social care Call for Advice; Education Select Committee Inquiry into Home Education and the Work and Pension Commons Select Committee Disability Employment Inquiry.
- Introduced Skunk workshops to create strategic and innovative solutions to the issues facing the SEND system.
- Surveyed our members on Home Education, Employment, and the Post 16 offer.

Our wider policy work

The NNPCF are members of the Special Education Consortium (SEC) and Health Policy Influencing Group (HPIG).

The Special Educational Consortium (SEC) is a group of organisations who protect and promote the rights of disabled children and children with special educational needs. SEC work with the Department for Education, members of parliament, and other decision-makers when there are proposals for changes in policy, legislation, regulations and guidance that may affect disabled children and young people and those with SEN.

HPIG is a group of children's health charities who work with the Department for Health and Social Care and NHS England to discuss proposals for changes in policy, legislation, regulations, and guidance that will affect children and young people, including those with SEND.

Talking Points – NNPCF Key areas of focus

The Talking Points reflect our strategic priorities and shape our discussions with national partners. The Talking Points are reviewed annually. This year we have introduced Talking Points for Social Care, incorporating Short Breaks. You can find all of our talking points here: [Talking Points – National Network of Parent Carer Forums C.I.C \(nnpcf.org.uk\)](#)

Policy Briefings

Our Policy Briefings continue to keep parent carer forums informed of national policy developments. You can find our policy briefings here [Policy Briefings – National Network of Parent Carer Forums C.I.C \(nnpcf.org.uk\)](#)

Communication team

Richard Hobbs, Communications Lead

Over the course of the pandemic, our communications channels became even more important as the world turned to a electronic ways of working.

The communications team worked hard keeping our members informed of the latest developments during the pandemic and the work that the NNPCF was doing to further the interests of children and young people with SEND. The statistics in the snapshot of the year section above illustrate this.

However, we did not stop there. Recognising the need for a stronger communications infrastructure, the communications team also upgraded our infrastructure during the year – we moved away from our old e-mail system and migrated to using the latest Microsoft suite of products, replaced our aging website and moved to new virtual meeting tools. We also implemented new means to talk to and listen to our membership as we introduced survey monkey and mentimeter to our tool box.

Finance and operations

Claire Powers, Finance and Operations Lead

As we move to running as a separate community interest company, we recruited a finance and operations lead during the year.

A lot of time and effort has been spent establishing a robust infrastructure for the NNPCF – this has included a new timesheeting system, implementing a new accounting platform and working towards a taking over our own payroll and bank accounts. Although much of this work goes on in the background, it is essential for the long-term future, stability and sustainability of the NNPCF.

Another casualty of the Covid 19 pandemic has been our progress in setting up as a separate legal entity. In December 2019 we registered a new community interest company but have not yet transferred operations to it. Many administrative tasks such as setting up a new bank account and registering changes in directors have been prohibitively difficult during the pandemic. Our wonderful partners at Contact, continue to host us in this period.

Regional Annual Reports

East Midlands

The outbreak of the Covid 19 Pandemic in early 2020 has put additional strain on Parent Carer Forums nationally and the East Midlands forums experienced no different.

While parent carers juggled working from home, household chores and home education, the time for strategic forum work diminished substantially, while everybody tried to adjust to stay well. In contrast, the requirement for strategic input into the national, regional and local guidance increased dramatically to ensure the views and rights of our most vulnerable children and young people were acknowledged and preserved.

As all face-to-face engagements moved to virtual meetings, advantages and disadvantages were noticed quickly. At the height of the pandemic it seemed so much easier to come together as a region resulting in weekly meetings (though later the frequency of these meetings dropped to monthly). Forums in the region appreciated the time to discuss issues and receive support. However, being so available sometimes resulted in back to back virtual calls, which after a few weeks, caused additional stresses not only on the WIFI network.

Most health related work takes place within the whole Midlands region, bringing the PCF network of the West and the East closer together. All forums are delighted with the leadership, passion and drive from Deborah Ward the newly appointed Regional SEND Manager, NHS England and NHS Improvement – Midlands. Her training investment and support for forum representatives were especially welcomed during this difficult year. A number of forum members attended the, 'Selling the message' training and all reported how useful it had been with comments made like 'would like more training like this.'

Huge progress has been made in the Mental Health sector with monthly strategic input from forums into the Children and Mental Health Partnership and the opportunities to be involved in the Key Working Pilot and Early Adopter schemes. All forums received training in the MH escalation pathways in an attempt to reduce Tier 4 hospital admissions.



East of England

2020-21 was extremely difficult both for families of children with SEND and parent carer forums as coronavirus put enormous strain on the whole SEND system.

Nevertheless, I was astounded by the incredible work that parent carer forums in the East of England did in supporting and representing their communities. We worked tirelessly to stay in contact with SEND families through social media, virtual meetings and practical help for the many that struggled. PCFs helped children with SEND who had been denied school places get back into school; they highlighted the need for reasonable adjustments in all walks of life and the impact of missed therapies for children with SEND. Through a period of unprecedented adversity, the PCFs in the Eastern region stepped up again and again.

The region also developed new ways of working: we met much more frequently to keep up with the rapid pace of covid 19 developments. In addition, the regional peer network moved to monthly virtual meetings that were a great success with over 100 attendees for some meetings cementing the 4-way partnership between education, health, social care and parents.

However, there were serious challenges – as local authorities, CCG's and families struggled, conflict between forums and local groups increased. The region pulled together providing support for one another with help from our colleagues in Contact. Within this difficult environment some Forums folded and new forums emerged. In other areas existing Forums grew in confidence as they established themselves in their local area and regionally.

We also saw some changes to the regional team. Karen Russell has stepped up as our new regional chair and Jo Harrison was appointed vice chair. Sylvia Jenkins continues to support the region as secretary.

However, the final word must go to thanking Kulwinder Bola who left her role as regional chair after 5 years. She leaves her mark on the region with the values and culture she fostered. She will be sorely missed.

London

As reported, 20/21 was an extremely difficult year for all, not least for our forums, their members and their families. However, extreme challenges bring out the best in our forums who stepped up to the challenge, working tirelessly to support their more vulnerable members, as well as juggling to support their own families.

The majority worked virtually from the beginning of lockdown one, running online coffee mornings, workshops, and information events, supporting and connecting families and working with local agencies throughout.

Just a few examples: Newham PCF raised funding to provide food for their local SEND families via their local food bank and Islington provided food packs. In addition, Enfield secured funding to provide laptops to school pupils, as well as link parents with their schools to secure school laptops.

Havering developed an online membership form for parents, recruiting and engaging with a record number of families as did Brent, and Waltham Forest similarly via their Facebook page; Southwark ran a series of online workshops which neighbouring families could attend; Kingston, a newly formed forum, ran several SEND law webinars.

Given the increasing need for mental health support for our families, Enfield, working co-productively with their LA and Educational Psychology service, helped develop mental health and wellbeing videos and support packs for parents. Westminster and Brent ran a series of mental health and wellbeing training programmes; Bexley delivered mini “pamper care” packs and Brent “wellbeing” packs which were all really well received; Harrow developed Carer’s Cards to help their families in need, and many forums were a key and integral part of their Local Area Covid Response teams.

Transition and Post-16 remained key on London’s agenda. Lewisham co-produced their “Preparing for Adulthood” strategy and Camden, their Preparing for Adulthood Pathway Guide to help parents navigate the system. Bexley developed and launched a Transition Planner working with their secondary schools to highlight the importance of the Year 9 reviews, as well as reaching out to their seldom heard communities. Merton forum’s great work resulted in parent carers being included in their area’s Carers’ Strategy.

As a region, we galvanised ourselves holding additional, monthly online sessions, some to provide support and others to cover important topics around Health, Care and Education such as Hospital Admission Avoidance, Dual and Multiple Exceptionality and feeding into the Children and Young People’s Social Care Review. Forums within North Central and North West London started to engage with their Integrated Care Systems around the NHSE/I Key Worker project, with the South East becoming an Early Adopter site.

Additionally, given the issues arising from the various lockdowns, a total of 23 forums jointly surveyed their members at the commencement of lockdown three; over 1700 families across London responded. The key findings were shared with the NNPCF Steering Group and subsequently more widely with the Association of London Directors of Children’s Services (ALDC) the London Strategic Managers Network, and the Department for Education to inform their future priorities.

We would like to say a huge thank all of you (whether specifically mentioned in the report or not) for all your hard work during such an exceptionally challenging period

North East & Cumbria

This time last year when I sat and wrote my annual update, I don't think that any of us would have thought the pandemic would have lasted long into 2021, yet here we are! Despite the ongoing impact of the Covid-19 pandemic, things in the North East & Cumbria have been extremely busy. The forums have gone from strength to strength and above and beyond to use creative and innovative ways to continue to engage and represent their membership. Alongside this ongoing work, I can happily report that we now have a fully operational forums in all thirteen of our local authority areas, a huge welcome to the new forum management teams and their membership. I am extremely proud that our region has been involved in co-producing a successful Early Adopter Keyworker bid, we are excited to continue to work with our colleagues across the ICS to bring the bid to life over the following months and years. We also had some very exciting news, in that the work the region was involved in as an accelerator site for the transforming care project pilot, has been picked up by NHSE for National roll out, it is great to see the work the forums in the North East and Cumbria region put into the project being recognised as good practice. We are now also involved in the National Autism in Schools project team and look forward to seeing the project being built upon and seeing the new projects come to fruition.

At the time of writing last year there were still three areas awaiting their SEND inspection, only one of these inspections has gone ahead to date so still two areas to be inspected thus far.

A good number of our forums wrote successful bids for Pears funding and it was inspiring to see the ways that the funding was used to support families across the North East & Cumbria. The resilience and strength our forums have found to carry on throughout a pandemic, juggling family life, home-schooling, and still finding time to support our member families is inspiring. It is a pleasure to see good practice being shared at our regular regional meetings and how supportive you are of each other. I am incredibly proud to represent our forums on a national level. A sincere thank you to all thirteen of the forums in the region and I look forward to seeing what the next year will bring.



North West

This year the North West have endured some of the most toughest lockdown restrictions in the country. The knock on effect of this (alongside Covid) on our forums, their membership and their families has been hard. As with the whole nation, isolation and confusion have impacted on the region's ability to function and work with professionals who are facing their own struggles in their local areas and as a region. We have seen forums adapt and change, grow and evolve, responding to their own and local needs. The magnitude of what faced us can not be stressed enough and we are immensely proud of the region in their approach to the work we do.

We have continued our weekly catch up sessions and a new active 'whatsapp' group to bring support to many PCF leads to connect with each other, share and most importantly laugh about our lives in a safe space.

During the year we have continued to develop and embed our relationships regionally with partners. This has been particularly visible with NHSE, navigating changes within NHSE regionally and ensuring there is an understanding about the role of PCF's and the region and share the benefits our networks can bring to the work that happens.

Many PCF's were involved in many of the NHSE projects including the Key Working Expression of Interests and consequently part of the pilot and early adopter sites. The balance for our PCF's to be involved in the co-production and prioritise their own workstreams and timings proved a challenge. It really helped shine a light on what we see as co-production and enabled us to have conversations regionally around what this looks like for us.

We are looking forward to building an even stronger regional network in the coming year and thank the region for their support in making the North West stronger through working together.



South East

As I reflect on my first year, as Regional Representative, dominated by the COVID pandemic, I am in awe of what has been achieved by the 19 forums. The sheer dedication to improving lives for our members has been inspiring. As we moved into our virtual world, we have met more regularly, seen a much higher attendance to meetings and supported each other throughout.

Although we didn't achieve everything we set out to, we have developed stronger links with each other, with health, and with local authority partners. We have been able to consistently engage with the SE19 regional work, increasing the areas of work we are involved with, and our regional PCF engagement has been strong. The Region has developed a sustainable structure including appointing a paid administrator, which I am very excited about, so there will be no stopping us this coming year!

I am very grateful for all the support I have received along with way; with special thanks going to Val Evans (West Sussex) for all her wonderful work on the CETR project and to Andrew Howard (FACT Bucks) who has chaired the region and shared the load of representing the region when my personal circumstances took priority. I would also like to thank Julie Singleton (Contact) for all her support for Forums in the Region.

I am really excited about the coming year, and all the projects that are in the pipeline, especially the shared training we have agreed to be a priority. Hopefully, someday soon we will have the opportunity to meet in person.



South West

This is my 4th year in this tenure, and what a year it has been. Covid whispers were starting in March and by the new financial year starting, we were in full blow lock downs.

I am always in awe of the way, we, parent carers just go with the flow and pick up where we need to be and just do what's needed and the South West did just that. We adapted to a new way of working. Equipment and virtual platforms were bought, and we learnt how to use them, literally in minutes. Everyone became creative in the way to approach this new way of existing. Wellbeing packs being sent out to families, driving across counties so that a family had food for the next 48 hours, was just some of the self-less acts that the forums in SW did, despite being parent carers themselves.

NHSE were the first organisation to get on board with weekly calls and a 'if anything crops up in the meantime just call us' kind of attitude.

They were instrumental when it came to Somerset forum challenging the DNAR that was coming out of one residential setting locally, announced on twitter by Mencap, it was quickly resolved and of course the critical frailty score (CFS) debacle soon followed, and forums were helpful to pass on messages and guidance.

I am always proud of my forums in the South West, we are like family and they always rise to meet challenges and this year they have surpassed all expectations. Keeping their local areas up to date with vaccination protocols to helping their area to think creatively about annual reviews and challenging them when things are not happening.

Special thanks though to Sue Mennear from Contact, Ruth Hobbs in Somerset for being our regional admin and Kay Henry from Cornwall for looking after our regional Facebook group, and of course all 15 forums, of which I couldn't do it without you and I am in awe of you all.



West Midlands

The year started in the early stages of the Covid-19 pandemic, this meant that most forums took a small break to catch their breath and to figure out how they could balance their home lives and their forums before starting to reach out and engage with their communities and local systems. The challenges faced by many included redeployment of staff in key SEND roles, suspension of strategic activities, and of course their disconnected communities becoming more isolated than ever.

However, once forums had started to re-engage, they accomplished some amazing things:

- Care packages for local Parent Carers, check in calls, and information sheets
- Vaccination access for Parent Carers and those with LD being successfully challenged and promoted effectively
- Coproduction charters, frameworks, and quality assurance developments
- Surveys, virtual events, workshops, and drop in sessions
- WSOA response work
- LDA Roadmap, Keyworker, and Admissions Avoidance localised engagement pieces
- Relationship development
- Increased community engagement
- Attracting funding to host additional activities
- Training, learning, and information development sessions for families

As a Super Region (East and West Midlands) we delivered “selling the message” training that delivered some skills and tools for forum reps on how to make challenge and present their case in professional meetings which was funded by regional NHSEI SEND. We also worked on Admission Avoidance and raising awareness across the forums.

In West Midlands we have continued to co chair the CYP LDA program board, deliver training and webinars to Specialist Commissioners, Mental Health Commissioners, LDA Commissioners, and SEND leads. As well as continue to attend and represent parent carer forums across the region at various workstreams and opportunities.

This year will see an increase in opportunities to influence local systems through regional practice, this means we will need to increase our activities which is tremendously exciting.

Yorkshire & Humber

A very different year for everyone, for our forums this has been quite challenging; reflected in adapting to digital engagement and support, continuing a focus on positives learnt through the pandemic and keeping communication channels open with Local Authorities and families. In contrast, many of our forums have used their parent carer ingenuity and resilience resulting in creative and innovative ideas and practices in reaching their families and working in partnership with both Local Authorities and VCS organisations. Provision of wellbeing packs for their families, developing MOU's and co-production charters to enable equality and improve relationships. There have been Local Authorities who have reached out to forums and realised their value in gathering the voices of their families to help them in planning and prioritising of services. A few forums have used this time to rebrand and build better and increase their membership. Keeping the region connected with drop ins and catch ups so we could share and support each other and the use of webinars that enabled easier access for health, education and social care staff and practitioners to gain insight into our lives and was easy to join. To lighten the mood we held 'Co-production Bingo' for forums and SEND leads across the region, in some cases this was the first time a forum had seen 'face to face' the people they only knew from emails and this helped demystify preconceived views of forums. Improving relationships has led, in some cases, to working together, for example, Keyworking. Not all forums have been able to grow and have struggled, caring and not being able to access support has come at a cost. We continue to try and support each other and share the good practice that has been in abundance in this very different year.



Wow moments!

Full version of the wow moments are available at www.nnpf.org.uk

Herefordshire delivered parent rep training and produced some sibling activity opportunities

Shropshire co-produced a framework, which is recognised as best practice regionally and nationally

SEND Alliance Cumbria, or SENDAC for short, are proud to have established a new parent carer forum in Cumbria during a pandemic

Sunderland lockdown #1, we introduced a weekly K.I.T. meeting with local practitioners across health, education, and social care.



Parent Carers Cornwall worked with parents, young people with special educational needs and disabilities (SEND) and practitioners to improve support for children and young people when they are facing life changes or 'transitions' such as moving from early years to primary school or from secondary school to work, college or university.

Bracknell Forest Parent Carer Forum highlighting the need for an adult provision for our young people and adults with SEN. A building for 18+ that is their own.

Worked with SENDIASS to run lots of popular training courses and we have adapted our Local Offer event into a booklet which families loved.

The Wiltshire Parent Carer Council – early in the pandemic, the forum conducted a survey to ask how parents felt about their children returning back to school. The results were shared and informed the LA's 'COVID-19: returning to school advice for parents' publication.



Telford & Wrekin did wellbeing calls to check in on vulnerable families

Redcar & Cleveland, we are proud to have re-launched and re-grouped into a new steering group

North Tyneside have written a successful business case to apply for funding to employ a Family Support Worker to be able to offer a service the likes of which did not exist in our local area

Hampshire Parent Carer Network incredibly proud of the whole HPCN Team for rallying round to support Parent Carers during the pandemic. Often juggling their own home schooling and caring responsibilities. Not to mention learning all about Zoom!





National Network of Parent Carer Forums
'Our Strength is our Shared Experience'
www.nnpkf.org.uk

Contact us

NNPCF

Email: info@nnpcf.org.uk

www.nnpkf.org.uk

NNPCF
209-211 City Road,
London
EC1V 1JN

Find us on
Facebook and Twitter
[@NNPCF](https://www.facebook.com/NNPCF)

TWENTY SIX
DESIGN

Report compiled in November 2021
by www.twentysixdesign.com